



*Kreativität ohne Grenzen.*

Farbkarte

## PLEXICOR®

### Uni (PG 1)\*



NANature



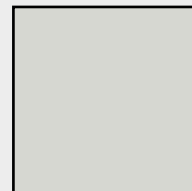
WH White



PN Pergamon



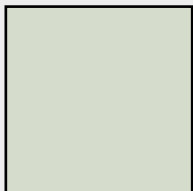
VA Vanilla



LG Light Grey



NW Neo White



EN Eagean

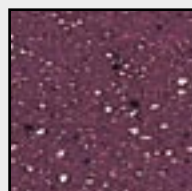
### Granit (PG 2)\*



LB Lago Blue



SK Sky Blue



RY Ruby



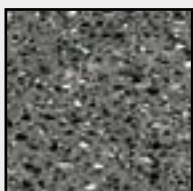
CA Cappuccino



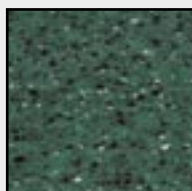
CY Cherry



SY Stormy



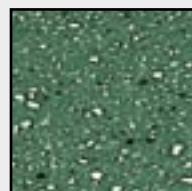
MI Midnight



EM Emerald



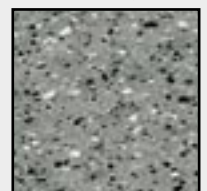
AT Atlantis



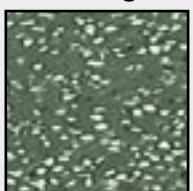
MW Meadow



CL Cool



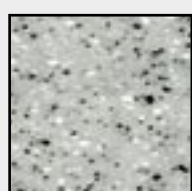
SA Sandy



ST Stardust

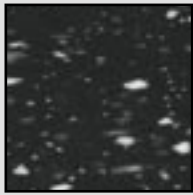


CH Champagne

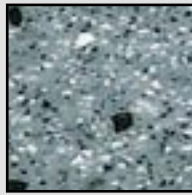


AS Ash

## Galaxy (PG 3)\*



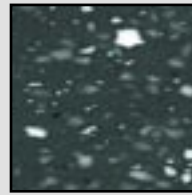
SN Saturn



NE Neptun



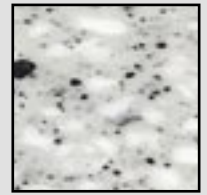
ME Mercury



PU Pluto



GA Galileo



VE Venus



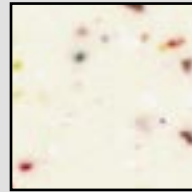
SP Space



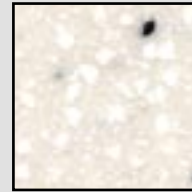
TE Terra



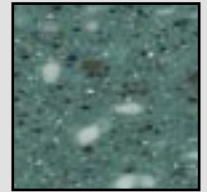
VG Vegas



CS Casino



ON Orion



CP Calypso



UR Uranus

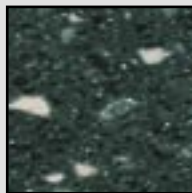


EA Earth

## Macro (PG 4)\*



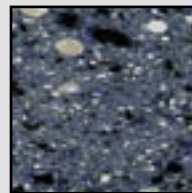
BA Baltic



PL Polynesia



CT Country



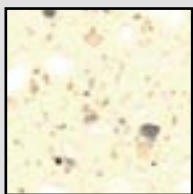
AD Adria



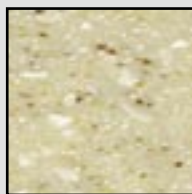
TO Toscana



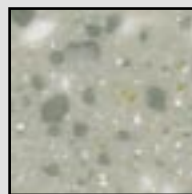
SW Snow



MT Malta



BE Beach



KT Kreta

Die drucktechnisch dargestellten Farben sind unverbindlich und können von der tatsächlichen Farbigkeit des Materials abweichen.

\*) PG = Preisgruppe

® = eingetragene Marke

PLEXICOR und PLEXIGLAS sind eingetragene Marken der Röhm GmbH & Co. KG, Darmstadt, Deutschland.

# PLEXICOR®

**Degussa**  
Geschäftsbereich Plexiglas

**Röhm GmbH & Co. KG**  
Zertifiziert nach DIN EN ISO 9001 (Qualität)  
und DIN EN ISO 14001 (Umwelt)

64293 Darmstadt  
T: +49 (0) 6151 18-3647  
F: +49 (0) 6151 18-843647  
E-Mail: [plexicor@degussa.com](mailto:plexicor@degussa.com)  
Internet: [www.para-chemie.at](http://www.para-chemie.at)  
[www.plexiglas.de](http://www.plexiglas.de)

50/0205/01880 (de)

Überreicht durch: